



Proven performance

Visibly different

Renoparenchymal Hypertension – Embolisation Treatment

Professor P Bosnjakovic

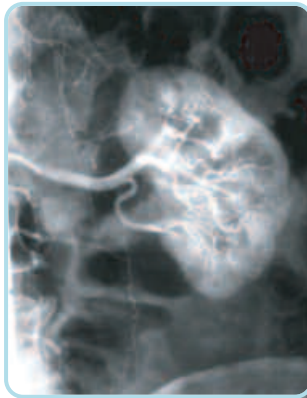
Institute of Radiology Clinical Centre, Nis, Serbia & Montenegro

Patient History

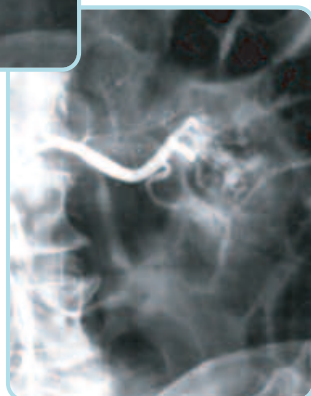
- Male patient with hypertension, poorly controlled and on medication therapy
- Non-functional left kidney

Procedure

- Left kidney embolised using 2ml Bead Block™



Left kidney pre-embolisation



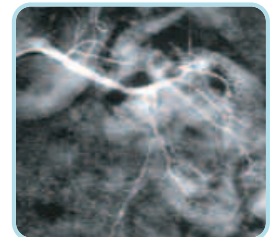
Left kidney post-embolisation

Outcome

- Ultrasound (i) shows significantly reduced kidney size
- Angiogram (ii) shows reduced diameter of the left renal artery



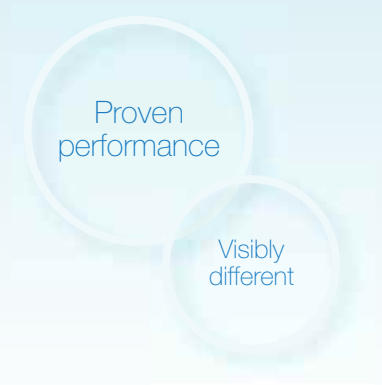
i. One month post-embolisation



ii. Two months post-embolisation

Clinical Outcome

- Hypertension controlled well with one-third of medication compared with dose required pre-intervention



Ordering Information

2ml Bead Block is suspended in 5ml physiological buffered saline in 20ml syringe and is packed singly.

Size Range μm	Colour Code	2ml Product Code
100 – 300	Yellow	EB2S103
300 – 500	Blue	EB2S305
500 – 700	Red	EB2S507
700 – 900	Green	EB2S709
900 – 1200	Purple	EB2S912

For more information, please contact:

Biocompatibles UK Limited

Chapman House
Farnham Business Park
Weydon Lane, Farnham
Surrey, GU9 8QL, UK

Phone: +44 (0)1252 732 732

Fax: +44 (0)1252 732 777

Email: marketing@biocompatibles.com

www.biocompatibles.com

Bead Block is manufactured by Biocompatibles UK Ltd. Chapman House, Farnham Business Park, Weydon Lane, Farnham, Surrey, GU9 8QL, UK
Bead Block is a trademark of Biocompatibles UK Ltd.
Copyright © 2011. EC11-015 Rev 1.

Important Information

Indications:

Bead Block™ is intended to be used for the embolisation of hypervascular tumours, including uterine fibroids and arteriovenous malformations (AVMs).

Potential Complications:

1. Undesirable reflux or passage of Bead Block into normal arteries adjacent to the targeted lesion or through the lesion into other arteries or arterial beds
2. Non-target embolisation
3. Pulmonary embolisation
4. Ischaemia at an undesirable location
5. Capillary bed saturation and tissue damage
6. Ischaemic stroke or ischaemic infarction
7. Vessel or lesion rupture and haemorrhage
8. Neurological deficits including cranial nerve palsies
9. Vasospasm
10. Death
11. Recanalisation
12. Foreign body reactions necessitating medical intervention
13. Infection necessitating medical intervention
14. Clot formation at the tip of the catheter and subsequent dislodgement

UFE-Specific Potential Complications:

Potential post-procedure complications include:

1. Abdominal pain
2. Discomfort
3. Fever
4. Nausea
5. Constipation
6. Premature ovarian failure (ie menopause)
7. Amenorrhea
8. Infection of the pelvic region
9. Uterine/ovarian necrosis
10. Phlebitis
11. Deep vein thrombosis with or without pulmonary embolism
12. Vaginal discharge
13. Tissue passage, fibroid sloughing, or fibroid expulsion post UFE
14. Post-UFE intervention to remove necrotic fibroid tissue
15. Vagal reaction
16. Transient hypertensive episode
17. Hysterectomy