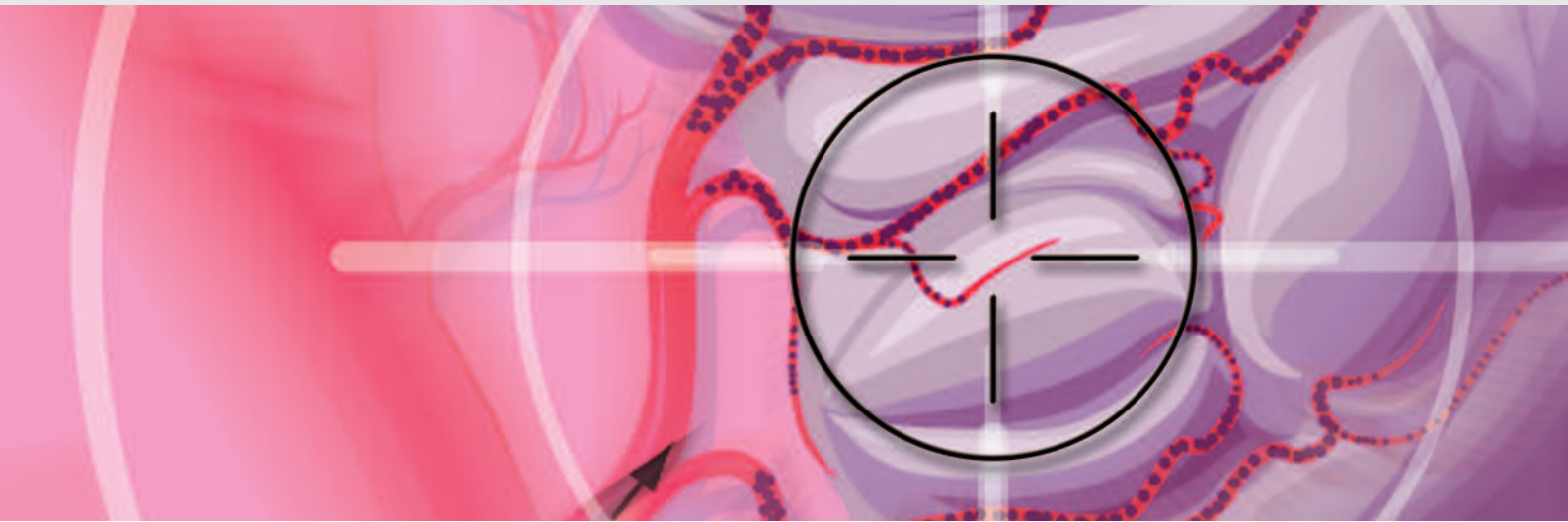


Precision Bead™

for Precision TACE



The first ever preloaded drug delivery embolic microspheres



Precision



targeting the tumour,
every time.

TACE™

Precision Bead™

for Precision TACE



The first ever preloaded drug delivery embolic microspheres

PRECISION Bead embolic microspheres are preloaded with doxorubicin to offer targeted and controlled local drug delivery. This combines with effective and accurate embolisation to deliver PRECISION TACE - a therapy now proven to offer significant benefits over conventional trans-arterial chemo-embolisation procedures.

Target 1



Increased Tumour Response

- PRECISION TACE tumour response rates are 78% at six months post procedure¹, significantly higher than the tumour response rate of 35% observed with conventional TACE.²

Target 2



Lower Systemic Effects

- Compared to conventional TACE, PRECISION TACE reduces the peak systemic blood plasma levels by more than 99%.^{1,4}
- Complication rates are reduced to 7% at six months³ compared to 27.5% reported with conventional TACE.²

Target 3



Easy Preparation

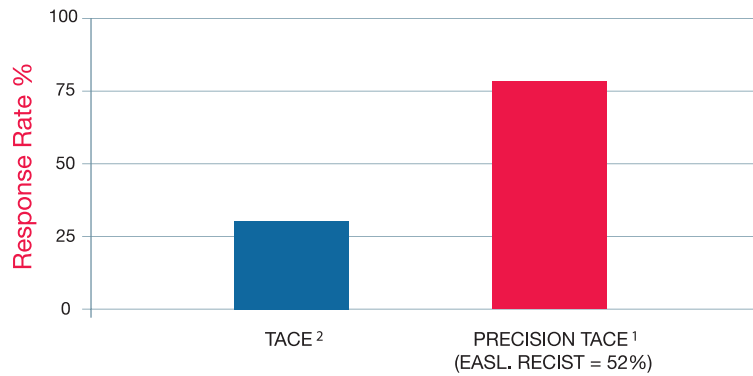
- Improved operator safety.
- Reduced manipulation steps and shorter preparation time.
- Excellent suspension and stability in contrast media.
- Packaged sterile in a foil pouch.

“ Chemo-embolisation using drug eluting beads [PRECISION Bead] facilitates a predictable bioavailability of doxorubicin with marked reduction of systemic exposure. While maintaining the local antitumoural efficacy, this favourable profile should result in a better tolerance to treatment with reduction of drug related toxicity, even if increasing the dosage beyond the usual maximum tolerated dose. ”

M. Varela et al.¹

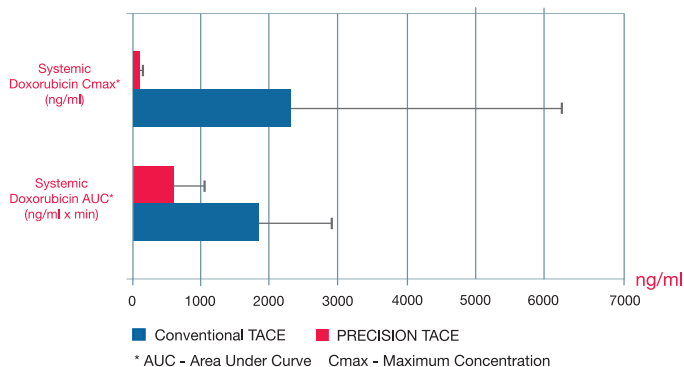
More

PRECISION BARCELONA Tumour Response (6 months)
PRECISION TACE (n=28) vs. TACE (n=40)

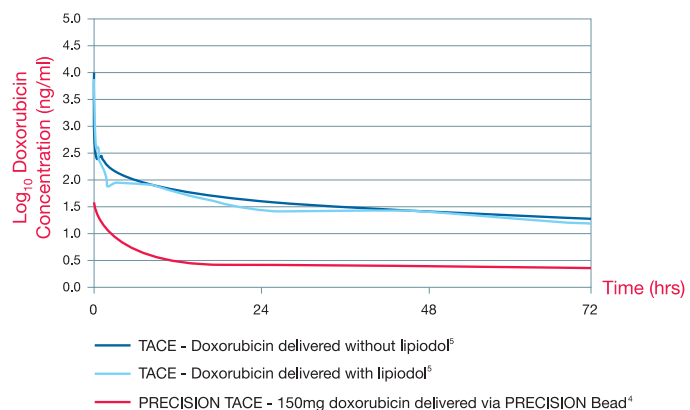


Less

PRECISION BARCELONA¹
Pharmacokinetics Evaluation



Systemic Doxorubicin Exposure
Pharmacokinetic Evaluation





Product Name	Dose of Doxorubicin per Vial	Size Range After Rehydration (μm)	Product Code
PRECISION 150	37.5mg	75-275 μm	P1501V37
PRECISION 300	37.5mg	200-400 μm	P3001V37
PRECISION 450	37.5mg	350-550 μm	P4501V37
PRECISION 700	37.5mg	600-800 μm	P7001V37

Doxorubicin Dose Information

- The maximum recommended dose is 150mg dose doxorubicin
- PRECISION Bead is preloaded with a dose of 37.5mg doxorubicin per vial

Re-hydration

- To each vial add 3ml sterile water
- Gently agitate the vial to mix the contents



Transfer to Syringe

- Transfer to a syringe and add an equal volume of contrast media



References

1. Varela, M., Real, M., et al. Chemoembolization of hepatocellular carcinoma with drug eluting beads reduces the systemic availability of doxorubicin. A pharmacokinetic assessment. Poster presentation. AASLD 2005.
2. Llovet J.M., et al. The Lancet 359:1734-1739; 2002
3. Internal data on file. Biocompatibles UK Ltd
4. Poon, R., Treatment of Asian Patients with Hepatocellular Carcinoma (HCC) using doxorubicin Eluting Bead Embolization (PRECISION ASIA STUDY) Presentation at CIRSE 2004.
5. Johnson et al. J. Hepatology 1991; 13:120-127



Chapman House
Farnham Business Park
Weydon Lane
Farnham, Surrey
GU9 8QL UK
Tel No: +44 (0)1252 732 732
Fax No: +44 (0)1252 732 777

Precision Bead is currently only available for sale and distribution in Hong Kong
© 2005 Biocompatibles UK Ltd. EC443

